



Pony Testing International Group

报告编号(Report ID): MLIG2UAB32795721

UN38.3 测试报告

UN38.3 Test Report

Sample Description & Model	Lithium thionyl chloride battery ER17505
Applicant	Wuhan Voltec Energy Sources Co., Ltd.
Manufacturer	Wuhan Voltec Energy Sources Co., Ltd.

PONY 谱尼测试
Pony Testing International Group
www.ponytest.com

No.: MLIG2UAB32795721

Code: pla62z





Pony Testing International Group

I、SAMPLE DESCRIPTION

Sample Description	Lithium thionyl chloride battery		Sample Model	ER17505	
Applicant	Wuhan Voltec Energy Sources Co., Ltd.				
Manufacturer	Wuhan Voltec Energy Sources Co., Ltd.				
Nominal Voltage	3.6V	Rated Capacity	3600mAh	Limited Charge Voltage	---
Charge Current	---	Maximum Continuous Charge Current	---	End Charge Current	---
Cut-off Voltage	2.0V	Maximum Discharge Current	120mA	Use	Instrumentation
Cell Number In Each Battery	1PCS	Cell Model	ER17505	Cell Capacity	3600mAh
Electrochemistry System	LiSOCl ₂				
Manufacturer of cell	Wuhan Voltec Energy Sources Co., Ltd.				
Entrust date	2017-06-08		Finished date	2017-06-27	

II、TEST METHOD

UNITED NATIONS "Recommendations on the TRANSPORT OF DANGEROUS GOODS" Manual of Tests and Criteria (ST/SG/AC.10/11/Rev.6), Part III sub-section.

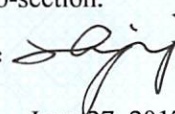
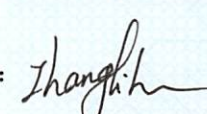
III、TEST ITEM

- | | |
|------------------------|---------------------------|
| 1. Altitude simulation | 5. External short circuit |
| 2. Thermal test | 6. Crush |
| 3. Vibration | 7. Overcharge |
| 4. Shock | 8. Forced discharge |

IV、CONCLUSION

ITEM	SAMPLE NUMBER	STANDARD	CONCLUSION
Altitude simulation	N1~N10 N11~N20	UN38.3 ST/SG/AC.10/11/Rev.6	PASS
Thermal test			PASS
Vibration			PASS
Shock			PASS
External short circuit			PASS
Crush	N21~N30		PASS
Overcharge	---		N/A (Not applicable)
Forced discharge	N31~N40		PASS

The Samples has passed the test items of UNITED NATIONS "Recommendations on the TRANSPORT OF DANGEROUS GOODS" Manual of Tests and Criteria (ST/SG/AC.10/11/Rev.6), Part III sub-section.

Appraiser: Checker: Approver: 

Issue Date: June 27, 2017

www.ponytest.com ©Hotline 400-819-5688

北京实验室: (010) 82618116 长春实验室: (0431) 85150908 上海实验室: (021) 64851999 深圳实验室: (0755) 26050909
 青岛实验室: (0532) 88706866 哈尔滨实验室: (0451) 88104651 宁波实验室: (0574) 87736499 广州实验室: (020) 89224310
 天津实验室: (022) 27360730 大连实验室: (0411) 84650820 杭州实验室: (0571) 87219096 武汉实验室: (027) 83997127
 新疆实验室: (0991) 6684186 郑州实验室: (0371) 69350670 苏州实验室: (0512) 62997900 厦门实验室: (0592) 5568048



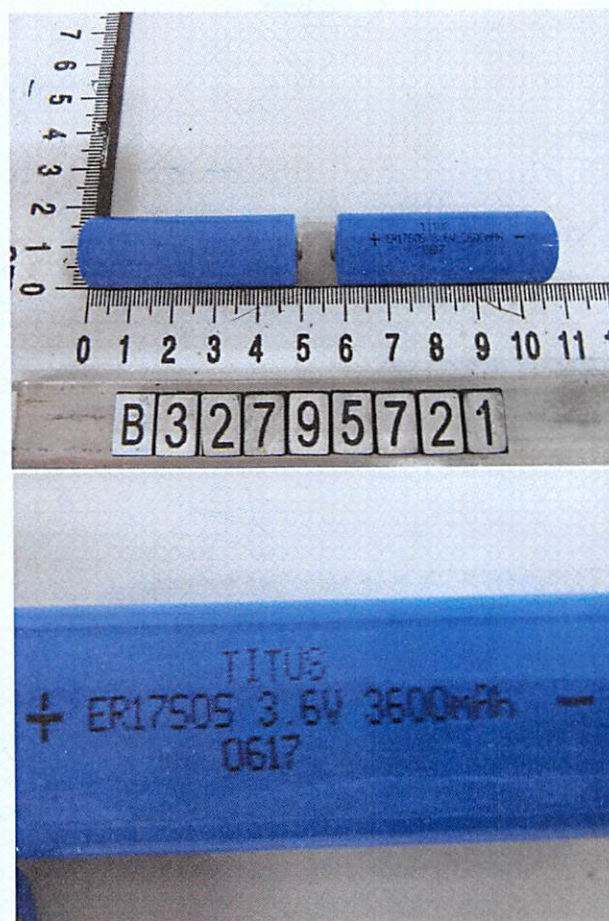
Pony Testing International Group

Notes:

N1~N10, N21~N25: Cells in undischarged states;

N11~N20, N26~N40: Cells in fully discharged states.

V、PHOTO OF THE SAMPLE



Authenticate the photo on original report only



Pony Testing International Group

VI、 TEST METHOD

Tests T.1 to T.5 shall be conducted in sequence on the same cell or battery. Tests T.6 and T.8 shall be conducted using not otherwise tested cells or batteries. Test T.7 may be conducted using undamaged batteries previously used in tests T.1 to T.5 for purposes of testing on cycled batteries.

In order to quantify the mass loss, the following procedure is provided:

$$\text{Mass loss(\%)} = (M_1 - M_2) / M_1 \times 100$$

Where M_1 is the mass before the test and M_2 is the mass after the test. When mass loss does not exceed the values in Table blow, it shall be considered as “no mass loss”.

Mass M of cell or battery	Mass loss limit
$M < 1\text{g}$	0.5%
$1\text{g} \leq M \leq 75\text{g}$	0.2%
$M > 75\text{g}$	0.1%

T.1 Altitude simulation

Test cells and batteries shall be stored at a pressure of 11.6 kPa or less for at least six hours at ambient temperature ($20 \pm 5^\circ\text{C}$).

Cells and batteries meet this requirement if there is no leakage, no venting, no disassembly, no rupture and no fire and if the open circuit voltage of each test cell or battery after testing is not less than 90% of its voltage immediately prior to this procedure. The requirement relating to voltage is not applicable to test cells and batteries at fully discharged states.

T.2 Thermal test

Test cells and batteries are to be stored for at least six hours at a test temperature equal to $72 \pm 2^\circ\text{C}$, followed by storage for at least six hours at a test temperature equal to $-40 \pm 2^\circ\text{C}$. The maximum time interval between test temperature extremes is 30 minutes. This procedure is to be repeated until 10 total cycles are complete, after which all test cells and batteries are to be stored for 24 hours at ambient temperature ($20 \pm 5^\circ\text{C}$). For large cells and batteries the duration of exposure to the test temperature extremes should be at least 12 hours.

Cells and batteries meet this requirement if there is no leakage, no venting, no disassembly, no rupture and no fire and if the open circuit voltage of each test cell or battery after testing is not less than 90% of its voltage immediately prior to this procedure. The requirement relating to voltage is not applicable to test cells and batteries at fully discharged states.



T.3 Vibration

Cells and batteries are firmly secured to the platform of the vibration machine without distorting the cells in such a manner as to faithfully transmit the vibration. The vibration shall be a sinusoidal waveform with a logarithmic sweep between 7 Hz and 200 Hz and back to 7 Hz traversed in 15 minutes. This cycle shall be repeated 12 times for a total of 3 hours for each of three mutually perpendicular mounting positions of the cell. One of the directions of vibration must be perpendicular to the terminal face.

The logarithmic frequency sweep shall differ for cells and batteries with a gross mass of not more than 12 kg (cells and small batteries), and for batteries with a gross mass of more than 12 kg (large batteries).

For cells and small batteries: from 7 Hz a peak acceleration of 1 g_n is maintained until 18 Hz is reached. The amplitude is then maintained at 0.8 mm (1.6 mm total excursion) and the frequency increased until a peak acceleration of 8 g_n occurs (approximately 50 Hz).

A peak acceleration of 8 g_n is then maintained until the frequency is increased to 200 Hz.

For large batteries: from 7 Hz to a peak acceleration of 1 g_n is maintained until 18 Hz is reached. The amplitude is then maintained at 0.8 mm (1.6 mm total excursion) and the frequency increased until a peak acceleration of 2 g_n occurs (approximately 25 Hz). A peak acceleration of 2 g_n is then maintained until the frequency is increased to 200 Hz.

Cells and batteries meet this requirement if there is no leakage, no venting, no disassembly, no rupture and no fire during the test and after the test and if the open circuit voltage of each test cell or battery after testing in its perpendicular mounting position is not less than 90% of its voltage immediately prior to this procedure. The requirement relating to voltage is not applicable to test cells and batteries at fully discharged states.

T.4 Shock

Test cells and batteries shall be secured to the testing machine by means of a rigid mount which will support all mounting surfaces of each test battery.

Each cell shall be subjected to a half-sine shock of peak acceleration of 150 g_n and pulse duration of 6 milliseconds. Alternatively, large cells may be subjected to a half-sine shock of peak acceleration of 50 g_n and pulse duration of 11 milliseconds.

Each battery shall be subjected to a half-sine shock of peak acceleration depending on the mass of the battery. The pulse duration shall be 6 milliseconds for small batteries and 11 milliseconds for large batteries. The formulas below are provided to calculate the appropriate minimum peak accelerations.



Battery	Minimum peak acceleration	Pulse duration
Small batteries	150 g _n or result of formula $\text{Acceleration}(g_n) = \sqrt{\left(\frac{100850}{\text{mass}^*}\right)}$ Whichever is smaller	6 ms
Large batteries	50 g _n or result of formula $\text{Acceleration}(g_n) = \sqrt{\left(\frac{30000}{\text{mass}^*}\right)}$ Whichever is smaller	11 ms

* Mass is expressed in kilograms.

Each cell or battery shall be subjected to three shocks in the positive direction and to three shocks in the negative direction in each of three mutually perpendicular mounting positions of the cell or battery for a total of 18 shocks.

Cells and batteries meet this requirement if there is no leakage, no venting, no disassembly, no rupture and no fire and if the open circuit voltage of each test cell or battery after testing is not less than 90% of its voltage immediately prior to this procedure. The requirement relating to voltage is not applicable to test cells and batteries at fully discharged states.

T.5 External short circuit

The cell or battery to be tested shall be heated for a period of time necessary to reach a homogeneous stabilized temperature of 57±4°C, measured on the external case. This period of time depends on the size and design of the cell or battery and should be assessed and documented. If this assessment is not feasible, the exposure time shall be at least 6 hours for small cells and small batteries, and 12 hours for large cells and large batteries. Then the cell or battery at 57±4°C shall be subjected to one short circuit condition with a total external resistance of less than 0.1 ohm. This short circuit condition is continued for at least one hour after the cell or battery external case temperature has returned to 57±4°C, or in the case of the large batteries, has decreased by half of the maximum temperature increase observed during the test and remains below that value. The short circuit and cooling down phases shall be conducted at least at ambient temperature.

Cells and batteries meet this requirement if their external temperature does not exceed 170 °C and there is no disassembly, no rupture and no fire during the test and within six hours after the test.



T.6 Impact / Crush

Impact (applicable to cylindrical cells not less than 18 mm in diameter)

The test sample cell or component cell is to be placed on a flat smooth surface. A 15.8 mm \pm 0.1mm diameter, at least 6 cm long, or the longest dimension of the cell, whichever is greater, Type 316 stainless steel bar is to be placed across the centre of the sample. A 9.1 kg \pm 0.1 kg mass is to be dropped from a height of 61 \pm 2.5 cm at the intersection of the bar and sample in a controlled manner using a near frictionless, vertical sliding track or channel with minimal drag on the falling mass. The vertical track or channel used to guide the falling mass shall be oriented 90 degrees from the horizontal supporting surface.

The test sample is to be impacted with its longitudinal axis parallel to the flat surface and perpendicular to the longitudinal axis of the 15.8 mm \pm 0.1mm diameter curved surface lying across the centre of the test sample. Each sample is to be subjected to only a single impact.

Crush (applicable to prismatic, pouch, coin/button cells and cylindrical cells less than 18 mm in diameter)

A cell or component cell is to be crushed between two flat surfaces. The crushing is to be gradual with a speed of approximately 1.5 cm/s at the first point of contact. The crushing is to be continued until the first of the three options below is reached.

- (a) The applied force reaches 13 kN \pm 0.78 kN;
- (b) The voltage of the cell drops by at least 100 mV; or
- (c) The cell is deformed by 50% or more of its original thickness.

Once the maximum pressure has been obtained, the voltage drops by 100 mV or more, or the cell is deformed by at least 50% of its original thickness, the pressure shall be released.

A prismatic or pouch cell shall be crushed by applying the force to the widest side. A button/coin cell shall be crushed by applying the force on its flat surfaces. For cylindrical cells, the crush force shall be applied perpendicular to the longitudinal axis.

Each test cell or component cell is to be subjected to one crush only. The test sample shall be observed for a further 6 h. The test shall be conducted using test cells or component cells that have not previously been subjected to other tests.

Cells and component cells meet this requirement if their external temperature does not exceed 170 °C and there is no disassembly and no fire during the test and within six hours after this test.

T.7 Overcharge

The charge current shall be twice the manufacturer's recommended maximum continuous charge current. The minimum voltage of the test shall be as follows:



Pony Testing International Group

- (a) When the manufacturer's recommended charge voltage is not more than 18V, the minimum voltage of the test shall be the lesser of two times the maximum charge voltage of the battery or 22V.
- (b) When the manufacturer's recommended charge voltage is more than 18V, the minimum voltage of the test shall be 1.2 times the maximum charge voltage.

Tests are to be conducted at ambient temperature; the duration of the test shall be 24 hours.

Rechargeable batteries meet this requirement if there is no disassembly and no fire during the test and within seven days after the test.

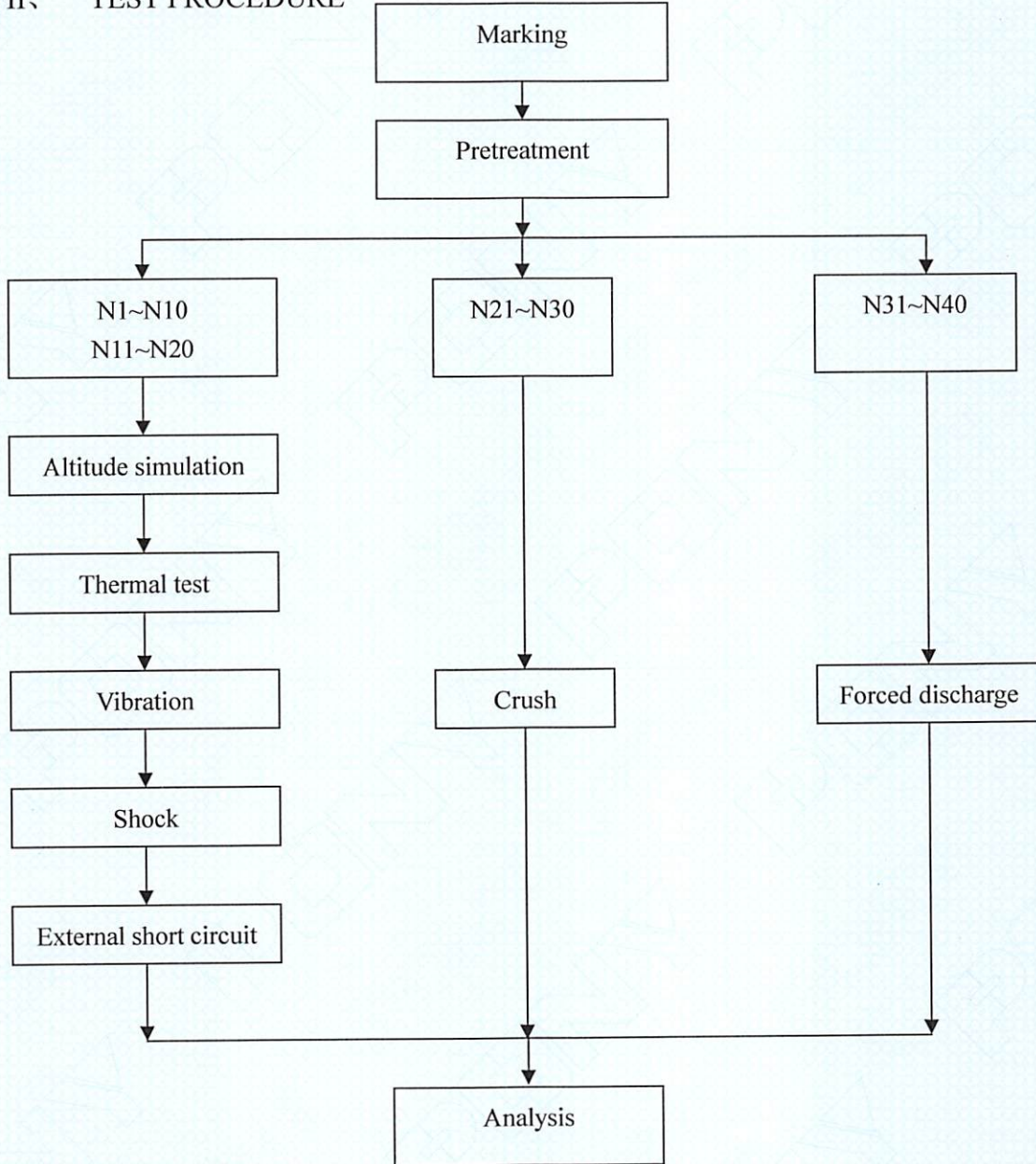
T.8 Forced discharge

Each cell shall be forced discharged at ambient temperature by connecting it in series with a 12V D.C. power supply at an initial current equal to the maximum discharge current specified by the manufacturer.

The specified discharge current is to be obtained by connecting a resistive load of the appropriate size and rating in series with the test cell. Each cell shall be forced discharged for a time interval (in hours) equal to its rated capacity divided by the initial test current (in ampere).

Primary or rechargeable cells meet this requirement if there is no disassembly and no fire during the test and within seven days after the test.

VII、 TEST PROCEDURE



VIII、 TEST APPARATUS

- IE-0121 Rechargeable battery test system
- IE-0434 Vacuum chamber
- IE-0090 Digital multimeter
- IE-0259 Electronic balance
- IE-0219 Temperature change chamber
- IE-0503 Electrodynamic type vibration test instrument
- IE-0287 Shock test instrument
- IE-0281 Temperature control circuit tester
- IE-0185 Thermoelectric pair
- IE-0198 Battery extrusion needling machine
- IE-0512 DC regulated power supply



Pony Testing International Group

IX、 DATA

1. Altitude simulation

No.	Pre-test		After test		Mass loss (%)	Voltage loss (%)	Whether leakage, venting, disassembly, rupture, fire (Y/N)
	Mass (g)	Voltage (V)	Mass (g)	Voltage (V)			
N1	22.397	3.672	22.396	3.672	0.004	0.000	N
N2	22.408	3.670	22.406	3.670	0.009	0.000	N
N3	22.452	3.671	22.450	3.672	0.009	-0.027	N
N4	22.454	3.672	22.454	3.672	0.000	0.000	N
N5	22.445	3.672	22.445	3.672	0.000	0.000	N
N6	22.522	3.672	22.521	3.672	0.004	0.000	N
N7	22.606	3.672	22.606	3.673	0.000	-0.027	N
N8	22.410	3.672	22.410	3.672	0.000	0.000	N
N9	22.518	3.672	22.518	3.672	0.000	0.000	N
N10	22.376	3.672	22.374	3.672	0.009	0.000	N
N11	22.493	---	22.491	---	0.009	---	N
N12	22.577	---	22.577	---	0.000	---	N
N13	22.271	---	22.271	---	0.000	---	N
N14	22.280	---	22.280	---	0.000	---	N
N15	22.806	---	22.804	---	0.009	---	N
N16	22.659	---	22.657	---	0.009	---	N
N17	22.798	---	22.798	---	0.000	---	N
N18	22.710	---	22.710	---	0.000	---	N
N19	22.396	---	22.395	---	0.004	---	N
N20	22.320	---	22.320	---	0.000	---	N



Pony Testing International Group

2. Thermal test

No.	Pre-test		After test		Mass loss (%)	Voltage loss (%)	Whether leakage, venting, disassembly, rupture, fire (Y/N)
	Mass (g)	Voltage (V)	Mass (g)	Voltage (V)			
N1	22.396	3.672	22.391	3.698	0.022	-0.708	N
N2	22.406	3.670	22.402	3.696	0.018	-0.708	N
N3	22.450	3.672	22.446	3.693	0.018	-0.572	N
N4	22.454	3.672	22.450	3.698	0.018	-0.708	N
N5	22.445	3.672	22.438	3.694	0.031	-0.599	N
N6	22.521	3.672	22.513	3.697	0.036	-0.681	N
N7	22.606	3.673	22.601	3.696	0.022	-0.626	N
N8	22.410	3.672	22.402	3.694	0.036	-0.599	N
N9	22.518	3.672	22.511	3.690	0.031	-0.490	N
N10	22.374	3.672	22.367	3.697	0.031	-0.681	N
N11	22.491	---	22.485	---	0.027	---	N
N12	22.577	---	22.574	---	0.013	---	N
N13	22.271	---	22.268	---	0.013	---	N
N14	22.280	---	22.275	---	0.022	---	N
N15	22.804	---	22.801	---	0.013	---	N
N16	22.657	---	22.653	---	0.018	---	N
N17	22.798	---	22.793	---	0.022	---	N
N18	22.710	---	22.706	---	0.018	---	N
N19	22.395	---	22.392	---	0.013	---	N
N20	22.320	---	22.317	---	0.013	---	N



Pony Testing International Group

3. Vibration

No.	Pre-test		After test		Mass loss (%)	Voltage loss (%)	Whether leakage, venting, disassembly, rupture, fire (Y/N)
	Mass (g)	Voltage (V)	Mass (g)	Voltage (V)			
N1	22.391	3.698	22.390	3.684	0.004	0.379	N
N2	22.402	3.696	22.402	3.683	0.000	0.352	N
N3	22.446	3.693	22.446	3.681	0.000	0.325	N
N4	22.450	3.698	22.450	3.685	0.000	0.352	N
N5	22.438	3.694	22.437	3.679	0.004	0.406	N
N6	22.513	3.697	22.512	3.679	0.004	0.487	N
N7	22.601	3.696	22.601	3.681	0.000	0.406	N
N8	22.402	3.694	22.402	3.682	0.000	0.325	N
N9	22.511	3.690	22.511	3.679	0.000	0.298	N
N10	22.367	3.697	22.367	3.680	0.000	0.460	N
N11	22.485	---	22.485	---	0.000	---	N
N12	22.574	---	22.574	---	0.000	---	N
N13	22.268	---	22.268	---	0.000	---	N
N14	22.275	---	22.275	---	0.000	---	N
N15	22.801	---	22.800	---	0.004	---	N
N16	22.653	---	22.653	---	0.000	---	N
N17	22.793	---	22.792	---	0.004	---	N
N18	22.706	---	22.706	---	0.000	---	N
N19	22.392	---	22.391	---	0.004	---	N
N20	22.317	---	22.317	---	0.000	---	N



4. Shock

No.	Pre-test		After test		Mass loss (%)	Voltage loss (%)	Whether leakage, venting, disassembly, rupture, fire (Y/N)
	Mass (g)	Voltage (V)	Mass (g)	Voltage (V)			
N1	22.390	3.684	22.390	3.681	0.000	0.081	N
N2	22.402	3.683	22.401	3.681	0.004	0.054	N
N3	22.446	3.681	22.446	3.678	0.000	0.081	N
N4	22.450	3.685	22.450	3.682	0.000	0.081	N
N5	22.437	3.679	22.437	3.676	0.000	0.082	N
N6	22.512	3.679	22.512	3.676	0.000	0.082	N
N7	22.601	3.681	22.601	3.678	0.000	0.081	N
N8	22.402	3.682	22.402	3.679	0.000	0.081	N
N9	22.511	3.679	22.510	3.675	0.004	0.109	N
N10	22.367	3.680	22.367	3.677	0.000	0.082	N
N11	22.485	---	22.485	---	0.000	---	N
N12	22.574	---	22.574	---	0.000	---	N
N13	22.268	---	22.268	---	0.000	---	N
N14	22.275	---	22.275	---	0.000	---	N
N15	22.800	---	22.800	---	0.000	---	N
N16	22.653	---	22.652	---	0.004	---	N
N17	22.792	---	22.791	---	0.004	---	N
N18	22.706	---	22.706	---	0.000	---	N
N19	22.391	---	22.391	---	0.000	---	N
N20	22.317	---	22.317	---	0.000	---	N



Pony Testing International Group

5. External short circuit

No.	Peak temperature (°C)	Whether disassembly, rupture, fire (Y/N)
N1	73.5	N
N2	74.1	N
N3	73.9	N
N4	73.6	N
N5	73.7	N
N6	74.5	N
N7	73.6	N
N8	73.8	N
N9	74.2	N
N10	74.3	N
N11	72.1	N
N12	71.8	N
N13	71.7	N
N14	71.9	N
N15	72.0	N
N16	71.6	N
N17	72.1	N
N18	71.8	N
N19	71.9	N
N20	72.0	N

6. Crush

No.	Peak temperature (°C)	Whether disassembly, fire (Y/N)
N21	25.8	N
N22	26.1	N
N23	103.4	N
N24	98.6	N
N25	99.3	N
N26	25.6	N
N27	25.5	N
N28	25.8	N
N29	89.8	N
N30	25.6	N

7. Overcharge

N/A

8. Forced discharge

No.	Whether disassembly, fire (Y/N)
N31	N
N32	N
N33	N
N34	N
N35	N
N36	N
N37	N
N38	N
N39	N
N40	N

*** End of report ***